

**Online Supporting Information**

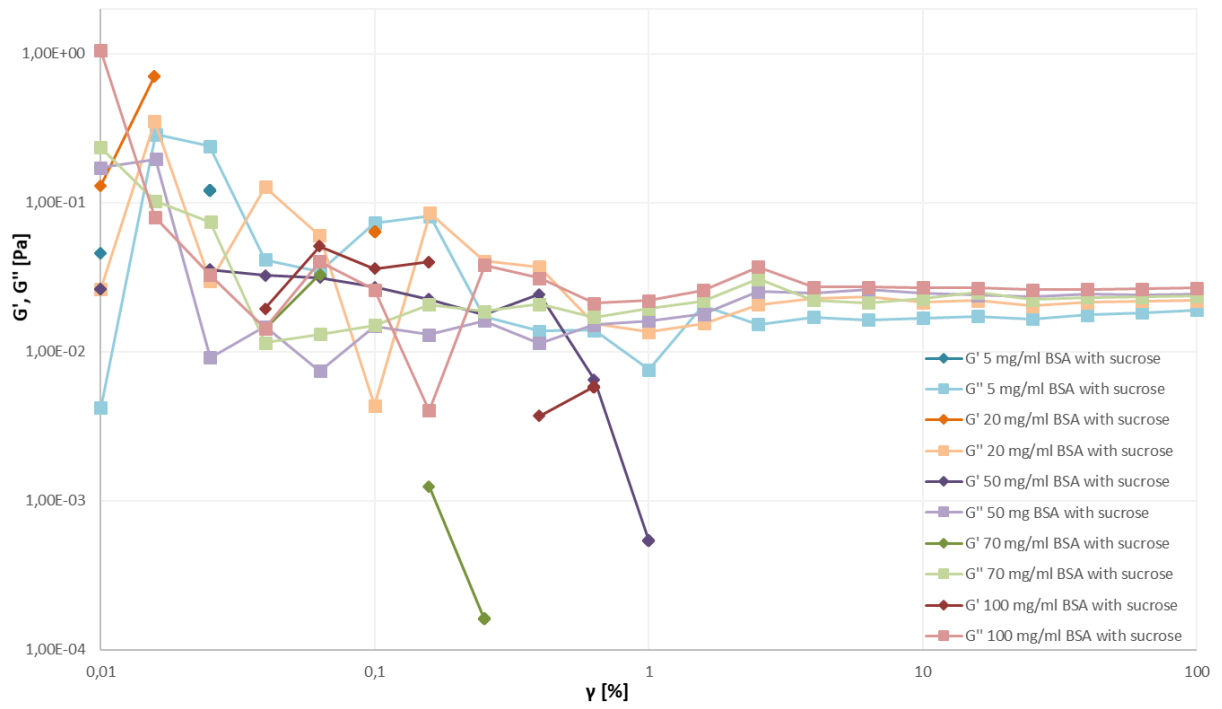
**Lyophilized protein formulations as a patient-centric dosage form: contribution toward sustainability paradigm**

Maja Bjelošević Žiberna, Pegi Ahlin Grabnar, Mirjana Gašperlin and Mirjam Gosenca Matjaž

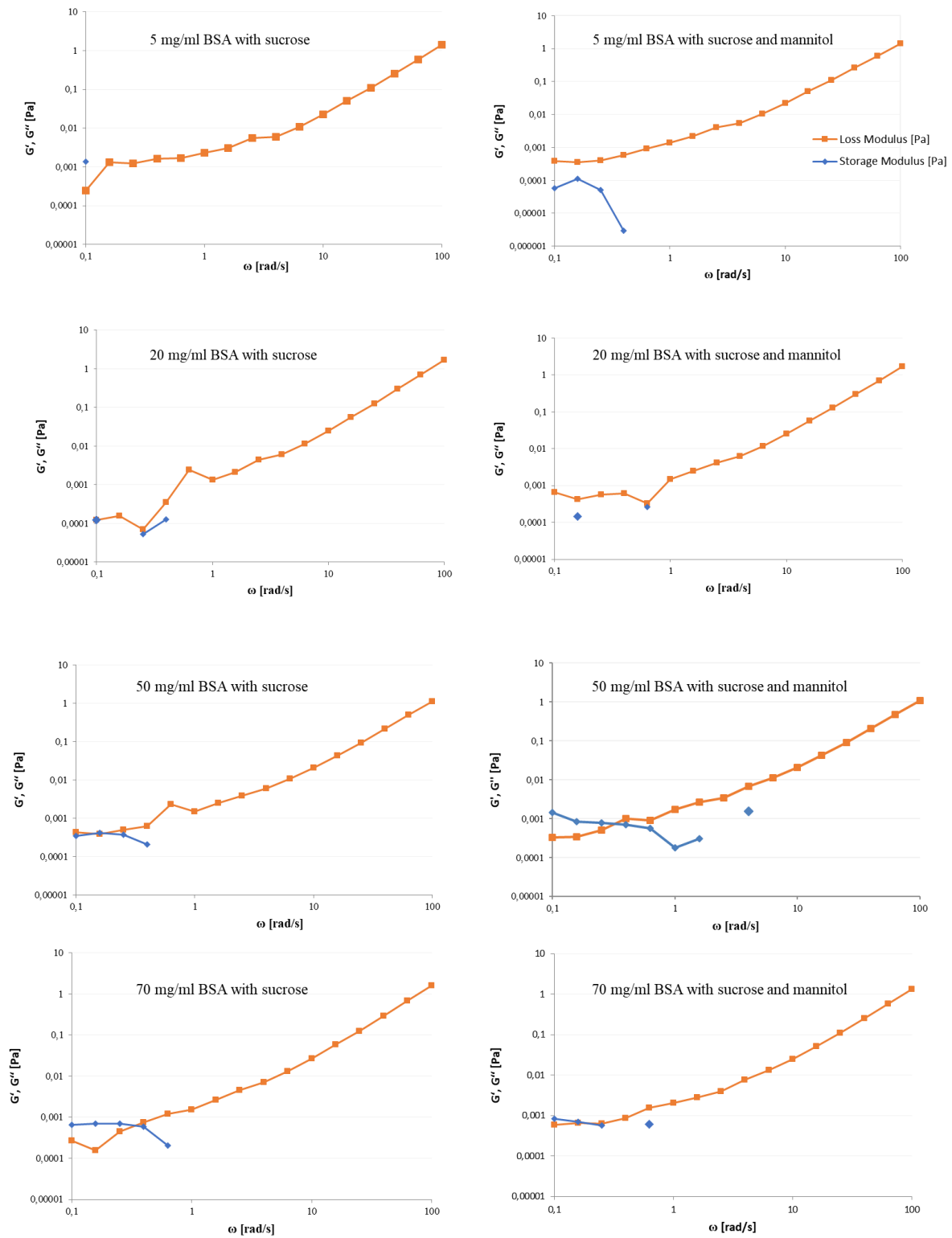
University of Ljubljana, Faculty of Pharmacy, Department of Pharmaceutical Technology, Askerceva cesta 7, 1000 Ljubljana, Slovenia

Correspondence; Maja Bjelošević Žiberna, [maja.bjelosevic.ziberna@ffa.uni-lj.si](mailto:maja.bjelosevic.ziberna@ffa.uni-lj.si)

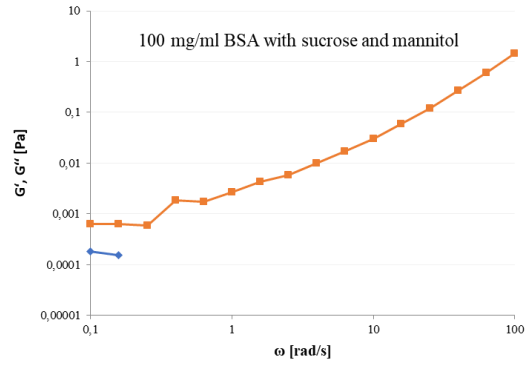
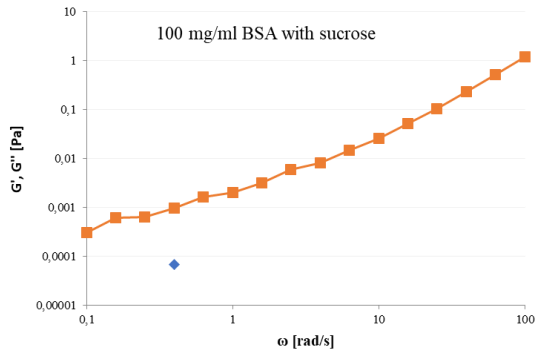
ORCID – Maja Bjelošević Žiberna <https://orcid.org/0000-0002-5581-5042>; Pegi Ahlin Grabnar <https://orcid.org/0000-0002-2251-9431>; Mirjana Gašperlin <https://orcid.org/0000-0001-8270-5693>; Mirjam Gosenca Matjaž <https://orcid.org/0000-0002-4048-5239>;



**Figure A.** Amplitude sweeps for different concentrations of BSA formulations containing sucrose at 25 °C.



**Figure B.** Storage ( $G'$ , blue  $\diamond$ -) and loss ( $G''$ , orange  $\square$ -) modulus for different concentrations of BSA formulations containing *sucrose* or *sucrose and mannitol* as function of frequency ( $\omega$ ) at a stress of 4 % at 25 °C.



**Cont. Figure B.** Storage ( $G'$ , blue  $\diamond$ -) and loss ( $G''$ , orange  $\square$ -) modulus for different concentrations of BSA formulations containing *sucrose* or *sucrose and mannitol* as function of frequency ( $\omega$ ) at a stress of 4 % at 25 °C.